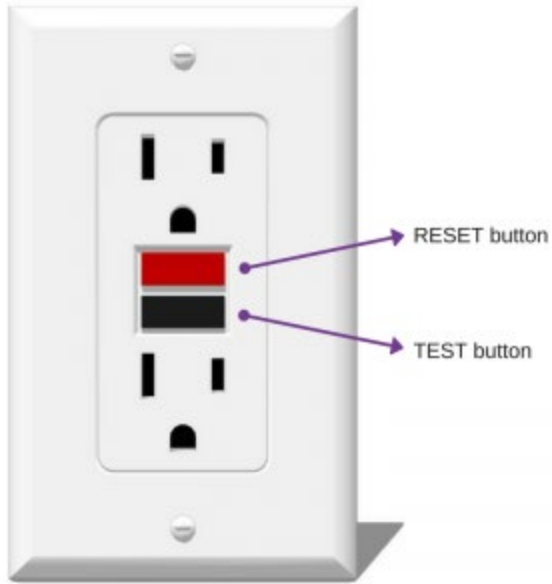


Washoe Housing Authority
DIY Tips & Tricks
How to Reset GFCI Outlets

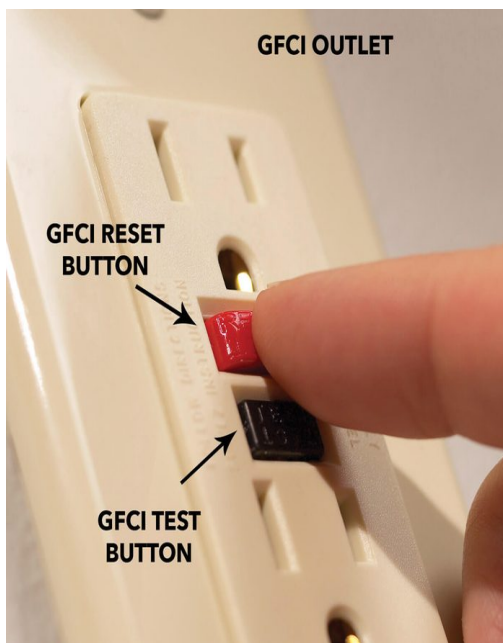


What is a GFCI Outlet?

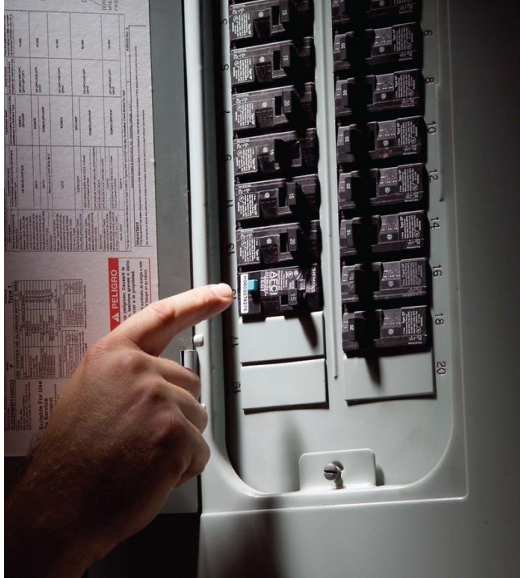
GFCI outlets are a safety feature that prevents damage to wiring and appliances within a home. This safety feature is in place to prevent fires and electrical shocks. The GFCI outlet monitors the electrical current for any changes and then cuts the current to the outlet.



1. When the GFCI outlet is not working, check the outlet to see if the *Test* button is pushed all the way in. If the outlet comes with an indicator light, the light will not be illuminated if there is a problem with the outlet.



2. Upon inspection if the *Test* button is pushed all the way in, first unplug any electrical devices from the outlet. Reset the breaker by pushing the *Reset* button on the GFCE outlet.



3. Should the GFCE outlet not reset upon pressing the button, go to the fuse box located within the residence and look to see if the breaker is turned off. Switch the breaker back to the *On* position, if the breaker has turned off from a surge of current.



4. After following these steps to troubleshoot the GFCE outlet do not solve the problem with the outlet, contact the Washoe Housing Authority (775-265-2410) and open a work order. The maintenance team will inspect and repair the faulty outlet.